



In the future homes will sell energy, not buy it.

**Are you ready?**

**LOGIX**<sup>®</sup>  
INSULATED CONCRETE FORMS

Good. Solid. Green.<sup>™</sup>



Our New Platinum Series



Net-Zero Residence Built With LOGIX



# Net-zero ready.

The next wave of green buildings will be net-zero – buildings that sell energy back to the grid instead of buying it.

LOGIX is “net-zero” ready.

With a superior R-value of up to R-27 built into its DNA, LOGIX helps you create an airtight building envelope today for the quality of thermal performance that will be expected tomorrow.

Today’s super-efficient LOGIX homes routinely cut energy bills in half and can achieve HERS Scores of 40, which means they are outperforming the existing building code by 60%.

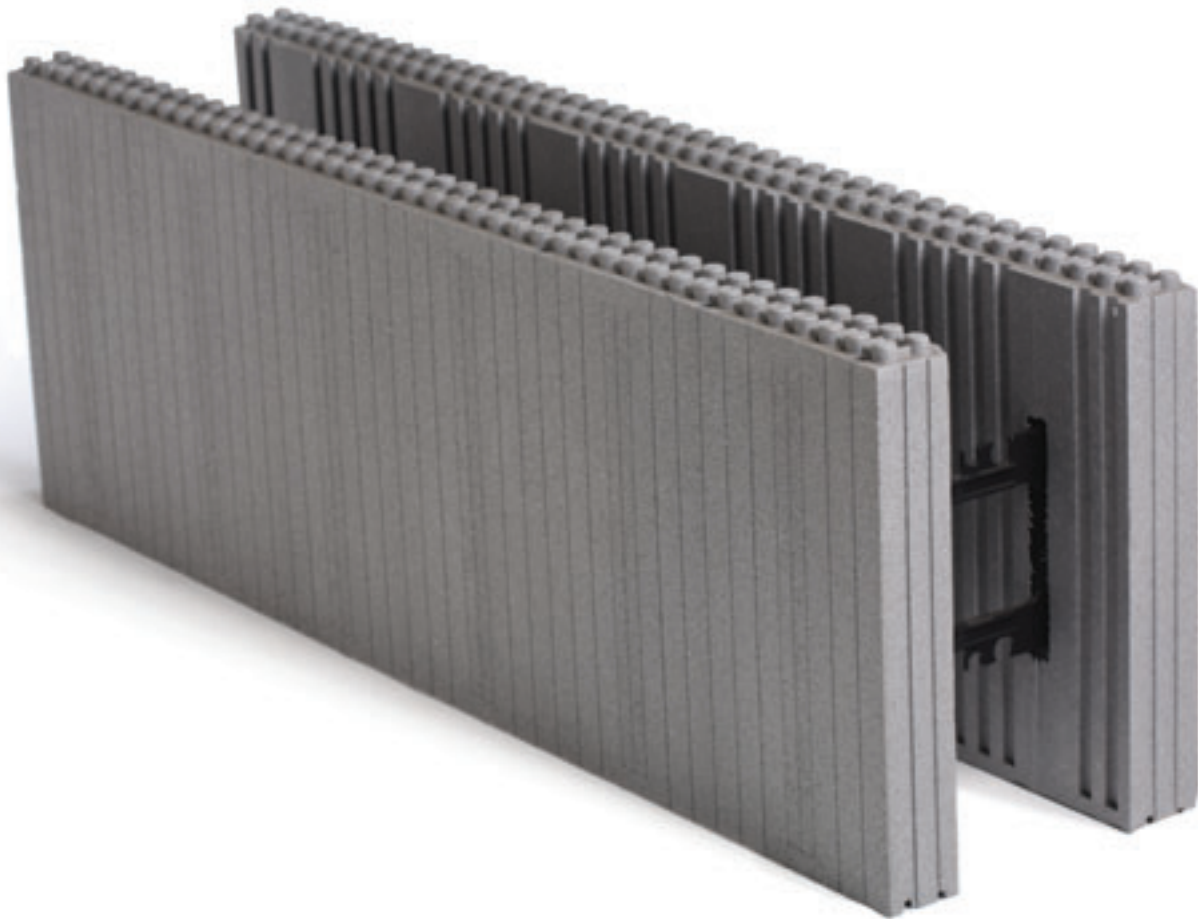
Combined with cost-effective renewable energy generation LOGIX is the solution for building commercially viable net-zero homes.

LOGIX is tomorrow’s smarter technology, today.

## Key Components of this LOGIX Net-Zero Home

- All exterior walls and the indoor pool constructed with LOGIX.
- Geothermal main heating system
- Electricity generated by rooftop photovoltaic cells
- Indoor pool heated by solar heated water collectors
- Home and pool also utilize passive solar technology
- Roof is insulated with R-38 batts and 1½ inches of urethane
- Concrete-based dark-gray roof shingles absorb heat
- Cool air is drawn from the pool atrium and circulated through the home

To learn much more about building a LOGIX net-zero home, contact your LOGIX Territory Manager and request a copy of our research whitepaper, “Designing Net-Zero Homes With LOGIX”.



# PLATINUM SERIES

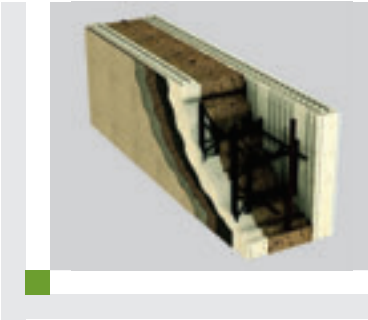
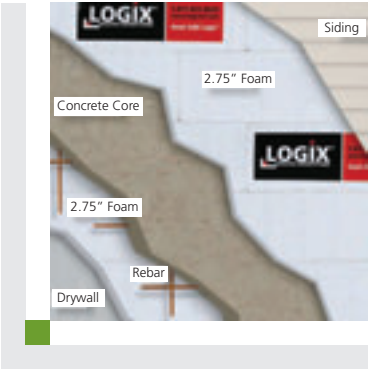
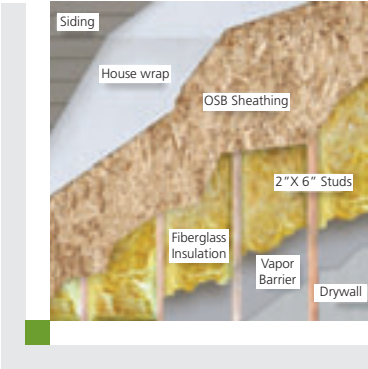
# Introducing LOGIX Platinum Series. To boldly go to net-zero and beyond.

LOGIX Platinum Series is powered by millions of graphite infrared absorbers and heat reflectors that reduce thermal conductivity.

- LOGIX Platinum Series provides more R-value without increasing wall thickness.
- LOGIX Platinum Series delivers R27 with our regular 2.75" panel thickness.
- That's 23% to 60% more R-value than most ICF's offer.
- LOGIX Platinum Series is better for contractors as well. The elimination of the sun glare from regular white panels makes it easier on the eyes.
- LOGIX Platinum Series is Greenguard Certified for indoor air quality.

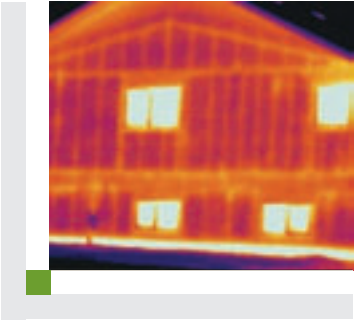


# LOGIX versus wood-frame construction.

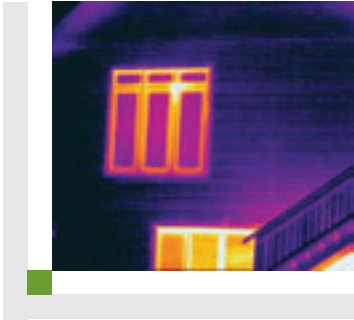


	Wood-frame wall system	LOGIX
Energy Efficiency	<ul style="list-style-type: none"> <li>Thermal bridging allows energy loss</li> <li>Insulation gaps</li> <li>Insulation (R value) erodes over time</li> </ul>	<p><b>The smarter technology</b></p> <ul style="list-style-type: none"> <li>No thermal bridging prevents energy loss</li> <li>Continuous insulation</li> <li>Constant R Value of up to R27 for life</li> </ul>
Sustainability	<ul style="list-style-type: none"> <li>Conventional construction has resulted in excessive insurance losses over the last 30 years</li> </ul>	<p><b>The stronger technology</b></p> <ul style="list-style-type: none"> <li>Wind Protection - Over 9 times stronger than wood frame construction</li> <li>Fire Protection - 4-hour fire rating</li> <li>Earthquake Protection - engineering available for all seismic zones</li> <li>Moisture Protection - Won't Rot</li> </ul>
Health & Comfort	<ul style="list-style-type: none"> <li>May contain adhesives and chemicals that could have adverse long term health effects when evaporated</li> <li>Wood and moisture provide an ideal environment for mold</li> </ul>	<p><b>The friendlier technology</b></p> <ul style="list-style-type: none"> <li>EPS and concrete are non-toxic and do not emit gas</li> <li>No nutrient source exists in structure for mold growth</li> <li>Outside noise reduced to a whisper</li> </ul>

Unlike typical wood framed walls, LOGIX walls prevent costly energy loss and will lower your energy bills.



Thermal image of a conventionally built wall.



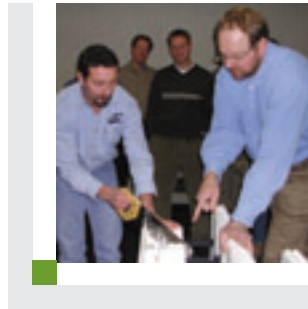
Thermal image of a LOGIX home with ICF wall.

To learn more about how LOGIX can reduce your energy bills, download our research whitepaper, "The ICF Effect - Enhancing Thermal Performance".

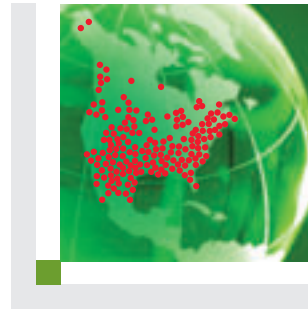
Support as superior as our products.



Locally deployed technical support staff

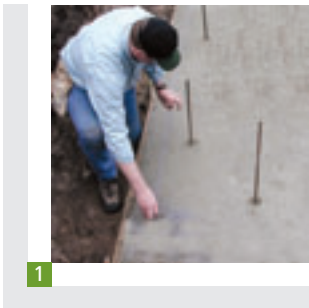


Installer training courses



Over 400 local stocking distributors and multiple manufacturing facilities across North America

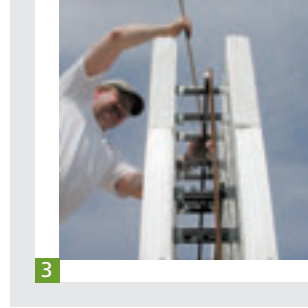
Six steps toward **GOOD. SOLID. GREEN.**



1 Prepare the job site



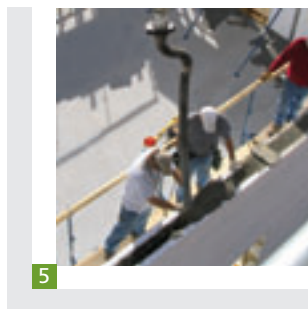
2 Place the first course



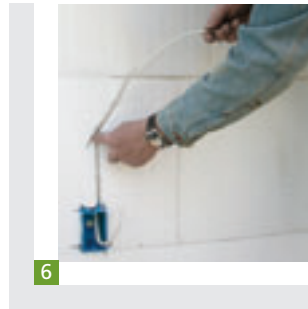
3 Place the rebar



4 Brace the wall



5 Pour the concrete



6 Install rough electrical and plumbing

Thousands of builders have taken LOGIX training programs and are available to offer you competitive pricing for your project. For more details and information, visit [logixicf.com](http://logixicf.com).

# Naturally, LOGIX.

Although the up-front cost of a LOGIX home may be slightly higher than a traditional wood-framed home, the actual "overall living" cost is often lower when energy savings are considered.

This chart illustrates the difference between "price" and "cost" using general comparative estimates.

	Traditional Wood Frame	LOGIX
House Price	\$300,000	\$315,000
Monthly Mortgage	\$1,920	\$2,016
Monthly Energy Bill	\$350	\$150
Monthly Home Insurance Premium (based on coastal areas)	\$185	\$60
Total Monthly Cost	\$2,455	\$2,226
Monthly Cash Flow Savings	\$0	\$229

The above are estimates only. Construction, mortgage and energy costs may vary depending on style/design and location of home.

The home built with LOGIX will save you approximately \$200 in monthly energy costs and up to \$125 in monthly insurance costs, allowing you to pay off your mortgage sooner.



Webs are made entirely of recycled plastic. LOGIX foam panels are entirely recyclable.

## Let's get started.

We can help you design your new LOGIX home, or we can help you integrate LOGIX into your existing home plans.

The Smarter, Faster and Stronger Technology.



**Good. Solid. Green.™**

For more information

Call toll free 1.888.415.6449  
or visit [www.logixicf.com](http://www.logixicf.com)

151 Paramount Rd  
Winnipeg, MB  
Canada R2X 2W6  
1.877.442.4465

54 1st St. NW  
P.O. Box 373  
Pelican Rapids, MN  
USA 56572  
1.877.823.0625

7-26318-TWP Rd  
531A  
Acheson, AB  
Canada T7X 5A3  
1.888.453.5961

P.O. Box 16923  
Wichita, KS  
USA 67216  
1.888.838.5038

#215-6333  
Unsworth Rd  
Chilliwack, BC  
Canada V2R 5M3  
1.888.453.5961

106 Perma "R" Rd  
Johnson City, TN  
USA 37604  
1.800.251.7532

6829 Dale Rd  
Port Hope, ON  
Canada L1A 3W3  
1.888.706.7709

91-110 Kaomi Loop  
Kapolei, HI  
USA 96707  
1.877.442.4465

31381 Pond Rd  
Building #2  
McFarland, CA  
USA 93250  
1.888.453.5961

13900 Industry Ave  
Becker, MN  
USA 55308  
1.877.442.4465

\* Energy Star for insulation is currently available only in the United States, and applies to residential construction only.